



presents:

CONTACT:  
Charlotte FALZONE  
Tel. +33 (0)6 81 16 87 80  
c h a r l o t t e @  
p a s d e d i e u x . c o m

*P  
h  
y  
s  
i  
c  
a  
l  
  
T  
h  
e  
a  
t  
r  
e*

don  
qui





**DON QUI** is based on vocal and corporeal experimentations. Inspired by Miguel de Cervantes' Don Quixote, the show portrays the process of inspiration and imagination of Cervantes as a fictitious character in the process of creation. The conception of the characters Don Quixote, Dulcinea, Sancho Panza, and others is based on the ontology of each actor. The result is a confluence of multiple cultures: French, Brazilian, Korean-American, Japanese, and Catalan.

The text used in the show is a Japanese children's song that has been transformed into invented dialogues, in which the significance of the original text loses its original meaning and is recontextualized through vocal and physical actions to communicate the actor's dramatic intentions.

Only the character of Cervantes, who intermittently appears, speaks in French and delivers to the spectators the playful poetry based in the original text.





*"The terrain without a road and thus, all is a road ... this land without direction leads everywhere without leading exactly to nowhere..."*

-Benito Pérez Galdós



don  
qui



don  
qui

**Duration :** 01h00

**General Audience**

**Author and Director:** Leela ALANIZ

#### Actors

- Yuka FUKUSHIMA
- Sergi EMILIANO
- Won KIM
- Sajeev PURUSHOTHAMA

#### Production

- François BLAIGNAN -- Music
- Paul DIVEL -- Lighting
- Lara PERBELLINI -- Costumes
- Elia DAVID -- Set Design

**photo credits:** Agnès Delachair, Iñigo Lopez, Martin ACB, Ndembo Ziavoula



## The Company

Founded in 2004, the "Pas de Dieux" company primarily bases its research on the possibilities of corporeal movement and expression for drama: the action that develops and branches, and creates a progression through its proper logic.

The research is based in Corporeal Mime of Etienne Decroux, a discipline that isolates and articulates the different parts of the body by varying the intensities and the rhythms of movement and by playing with muscular tension and relaxation.

The organic research of Theatre Anthropology integrates the impulses to the plasticity of corporeal techniques. Corporeal movement, like in spoken language, reveals through poetry the principle raison d'être.



#### CONTACT:

**Charlotte FALZONE**

Tel. +33 (0)6 81 16 87 80

charlotte@  
pasdedieux.com

[www.donqui.org](http://www.donqui.org)

# Tour

## **FESTIVAL de Théâtre à Eupen**

Eupen, Belgique, le 22 et 23 février, 2008

## **FESTIVAL Universo Teatro**

Benevento, Italy november 19 to 24, 2007

## **Les Arènes de Nanterre**

Nanterre, november 15 and 16, 2007

## **FESTIVAL SCÈNE OUVERTE**

Université de Nantes

Nantes, France, May 5, 2007

## **FESTIVAL RITU**

**Rencontres Internationales de Théâtre Universitaire**

Liège, Belgium, February 26 to March 4, 2007

## **Centre d'Animation les Halles le Marais**

Paris, January 16 and 19, 2007

## **FESTIVAL COS de mim i teatre gestual**

Reus, Barcelone, Spain October 27, 2006

## **INTERNATIONAL FESTIVALS in Argentina 2006**

**Tour of 10 theater festivals**

**Selected by the Instituto Nacional del Teatro, Argentina**

Rio Gallegos--October 22, Ushuaia--October 20, Rosario--October 14, Corrientes--October 12, Salta--October 10, Tucuman--October 8, Catamarca--October 7, Santiago del Estero--Octobre 6, Córdoba--October 4, Mendoza--October 1

## **XIX FESTIVAL DEL SUR TRES CONTINENTES**

**Municipal Theater of Agüimes**

Agüimes, Canary Islands, Spain, July 17, 2006

## **Bienal Internacional de Teatro de ACTOR - BITA**

Theater Auditorium of Cuenca, Cuenca, Spain, June 16, 2006

## **FESTUPIC**

Municipal Theater of Compiègne, France, June 1, 2006

## **FESTIVAL SCENES OUVERTES**

Paris X University, Nanterre, France, May 16, 2006

## **FESTIVAL MIME EN MAI**

Jardin Luxembourg, Paris, May 6,7, and 8, 2006

## **Festival ACTHEA**

Municipal Theater of Albi, France, April 28, 2006

## **Festival Ici et Demain**

Amphi 24, Paris 7 University, Paris, March 9 and 10, 2006

## **Amphi X, Université Paris 8**

Saint-Denis, France, February 28, 2006



# Recognition

## **• Jury Selection 2006 for a 10 festival tour in Argentina**

- Instituto Nacional del Teatro, Argentina

## **• Finalist Paris Prix Jeunes Talents Paris, May 2006**

## **• Winner BEST SHOW**

Festival ACTHEA

Albi, France, April 2006

## **• Nomination BEST ACTOR**

Sergi Emiliano

Festival ACTHEA

Albi, France, April 2006

## **• Winner Jury Prize**

Performing Arts Category

Festival Ici et Demain

Paris, 2006

# Sponsors





## **TECHNICAL RIDER**

### **Don Qui**

**Contact : Charlotte Falzone, management Tel: (33) 6 81 16 87 80**

**Mail : [charlotte@pasdedieux.com](mailto:charlotte@pasdedieux.com)**

**Won Kim, production Tel : (33) 1 48 05 22 98**

**Email : [won@pasdedieux.com](mailto:won@pasdedieux.com)**

**Leela Alaniz, director Tel : (33) 6 24 44 18 07**

**Email : [leela@pasdedieux.com](mailto:leela@pasdedieux.com)**

#### **GENERAL**

ALL AGES from 7 years

FRONTAL VIEW

4 ACTORS, 2 TECHNICIANS

SHOW LENGTH 60 minutes

#### **STAGE**

Minimum Dimensions: Stage : width 8 m x depth 6 m

Height till grill : 4 m

#### **Materials furnished by the company :**

1 burlap carpet : 11m X 8m

3 mounds of Styrofoam

130-150 meters of tape double sided in order tape carpet to stage

#### **Materials furnished by the Theater :**

Background: black curtain or neutral colored wall

1 roll of black gaffer tape

#### **LIGHTING**

##### **Materials furnished by the Theater :**

24/48 circuit board

Please see attached Lighting and Stage plans

#### **SOUND**

##### **Materials furnished by the Theater :**

**Amplified sound system adapted to theater :**

**1 CD player**

#### **STAFFING REQUIREMENTS : (minimum)**

**Morning : unload, setup of stage, lighting and sound, - 7 hours**

**1 stage manager**

**1 lighting tech**

**1 sound tech**

**2 stage hands**

**Practice : 2 heures**

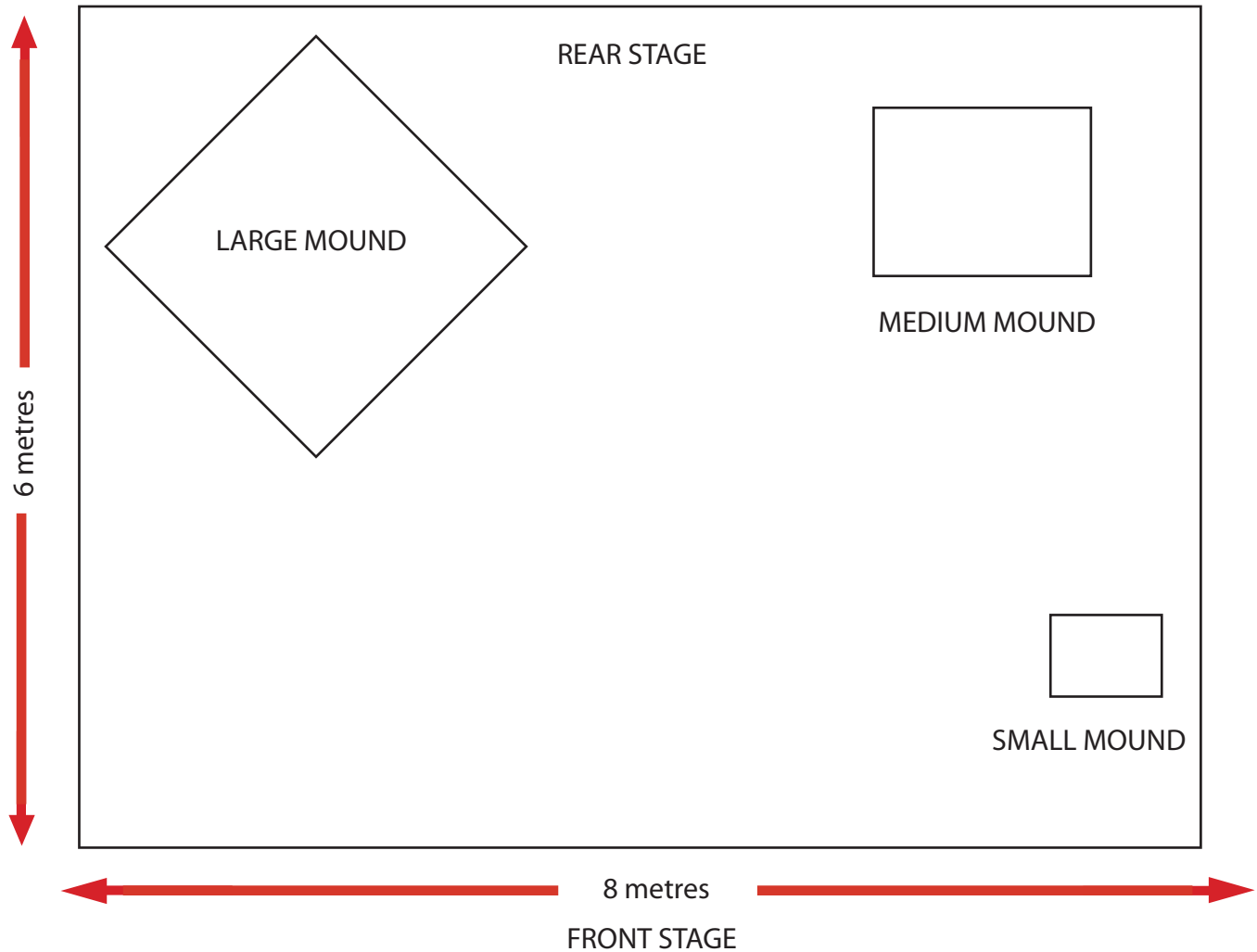
**Performance Night : breakdown and packing – 1 hour**

**1 stage manager**

**2 stage hands**

**CATERING for 7 persons in the loges**

# Scenography Plan



## DIMENSIONS

LARGE MOUND      2.5m x 2.5m x 0.6m

MEDIUM MOUND      1.2m x 1.8m x 0.4m

SMALL MOUND      0.7m x 0.5m x 0.3m

Minimun Stage Size for Scenography 8m x 6m

# Don Qui Lighting Schema / Plan Lumière

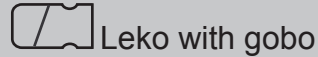
## KEY



FRESN

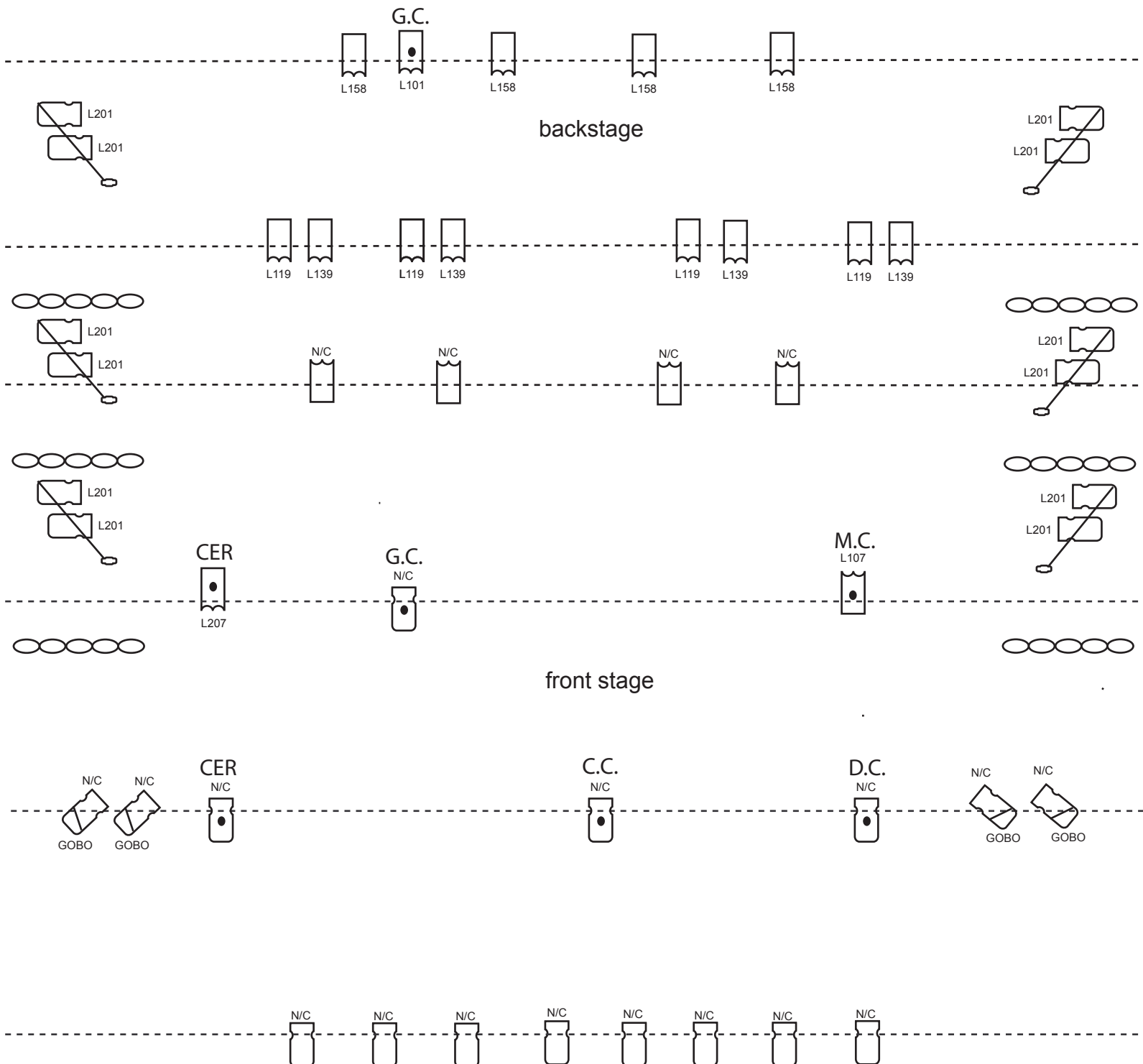


Leko, ETC



Leko with gobo

• special





**Lighting List / List de Lumière  
Don Qui**

<b>Number</b>	<b>Function</b>	<b>Equipment</b>	<b>Color</b>	<b>Note</b>
1	front(outside)	Leko,ETC	N/C	
2	front(outside)	Leko,ETC	N/C	
3	front(outside)	Leko,ETC	N/C	
4	front(outside)	Leko,ETC	N/C	
5	front(outside)	Leko,ETC	N/C	
6	front(outside)	Leko,ETC	N/C	
7	front(outside)	Leko,ETC	N/C	
8	front(outside)	Leko,ETC	N/C	
9	front(inside)	fresnel	N/C	
10	front(inside)	fresnel	N/C	
11	front(inside)	fresnel	N/C	
12	front(inside)	fresnel	N/C	
13	wash	fresnel	L119	blue
14	wash	fresnel	L119	blue
15	wash	fresnel	L119	blue
16	wash	fresnel	L119	blue
17	wash	fresnel	HT139	green
18	wash	fresnel	HT139	green
19	wash	fresnel	HT139	green
20	wash	fresnel	HT139	green
21	backlight	fresnel	L158	amber
22	backlight	fresnel	L158	amber
23	backlight	fresnel	L158	amber
24	backlight	fresnel	L158	amber
25	Box(outside)	Leko,ETC	N/C	GOBO
26	Box(outside)	Leko,ETC	N/C	GOBO
27	Box(outside)	Leko,ETC	N/C	GOBO
28	Box(outside)	Leko,ETC	N/C	GOBO
29	R.sidelight	Leko,ETC	L201	
30	R.sidelight	Leko,ETC	L201	
31	R.sidelight	Leko,ETC	L201	
32	R.sidelight	Leko,ETC	L201	
33	R.sidelight	Leko,ETC	L201	
34	R.sidelight	Leko,ETC	L201	
35	L.sidelight	Leko,ETC	L201	
36	L.sidelight	Leko,ETC	L201	
37	L.sidelight	Leko,ETC	L201	
38	L.sidelight	Leko,ETC	L201	
39	special	Leko,ETC	N/C	Cervantes 1st bar right
40	special	fresnel	L207	Cervantes 2ed bar right
41	special	Leko,ETC	N/C	big mound
42	special	fresnel	L101	big mound
43	special	Leko,ETC	N/C	DonQui- centre centre
44	special	Leko,ETC	N/C	DonQui- Left centre
45	special	fresnel	L108	middle mound 2ed bar left